

TECHNICAL BULLETIN

Description/Features

SCL Tile #2 Polishing Powder is designed

- to repair polished surface homogeneous tile where the original surface does not have a consistent shine or its surface is damaged by mild acid.
- to resurface a matte finished tile for an easy maintenance.

Additional Property:

- ✓ Does not contain any wax compound.
- ✓ It does not have wax build-up residue when regularly used

Uses:

Recommended for periodic cleaning and restoration.

Material Component:

Polishing Grade Powder

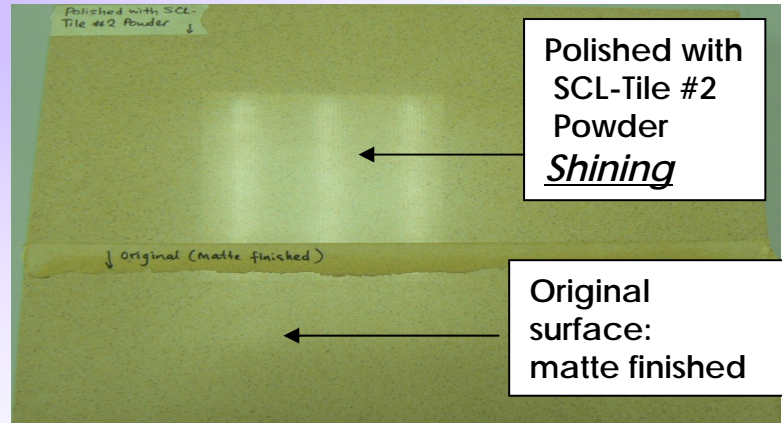
Available sizes: 1-kg, 4-kg & 20kg

Approximate Coverage

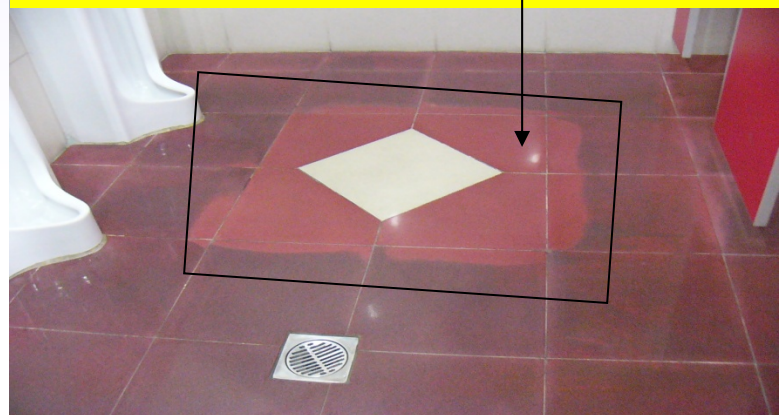
1-kg covers 40m² to 60m²

Polishing Application:

1. Use SCL-Tile #2 Polishing Powder to restore shine require floor polishing machine is 58 kg & more.
2. Use SCL-Tile #2 Polishing Powder for periodic cleaning: recommended weight of machine is between 48kg to 55kg.
3. Place one table spoon of SCL-Tile #2 Polishing Powder onto the floor.
4. Place the polishing machine on top of the powder before working with the machine.
5. A "3M" RED polishing pad is recommended.
6. Add only enough water so that the circular pattern left by the slurry is visible.
7. Polished the slurry until dry if you required to restore high shine.



After: Repair with SCL-Tile #2 Polishing Powder



Precautions

- Cover all surfaces that are not tiles
- Always test a small area first to familiarize with the product before working on a bigger area.
- If contacted with eyes, wash the affected area with plenty of water and call for a physician.
- Wash hands thoroughly before mealtime.
- Keep out of reach from children



SCL-TILECLEAN

is formulated for daily or periodic cleaning on Ceramic and Homogeneous tiles.

Dot Hazard Class: Not Hazardous