



TECHNICAL BULLETIN

Description/Features

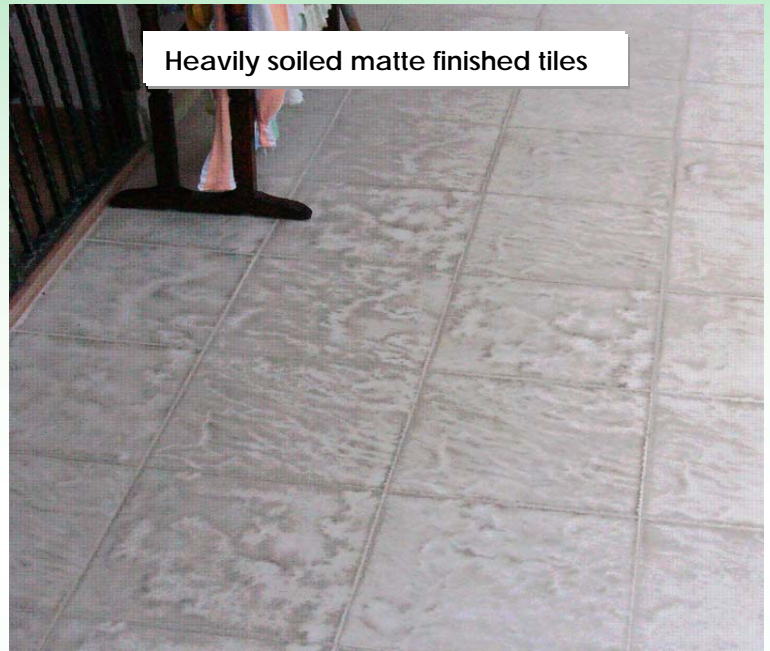
An alkaline (pH 9.6) stone cleaner formulated to remove heavily soiled surface and surface carbon stains. Applicable on all types of stone and all types of hard surface.

Used SCL STONECLEAN-Xtra for weekly or periodic cleaning:

- Mix 60ml / 120ml of Stoneclean Xtra solution with one gallon of water.
- Just mop and leave it to dry.
- Rinsing with water is not required.
- Stoneclean Xtra can also be used in concentrated for very heavily soiled surface.

Application Procedures:

1. If the floor is treated with a coating, removed the coating with SCL-XY stripper. Put 60ml or 120ml of SCL-Stoneclean Xtra (an intensive stone cleaner) dilute with one gallon of water into the solution tank.
2. Place one tablespoon of SCL-HP100 or HP200 Honing Powder onto the floor. This amount of powder is enough to scrub an area of 1.0 m x 1.0 m
3. Release enough of the diluted SCL Stoneclean Xtra from the solution tank.
4. Begin scrubbing the floor with a floor polishing machine attached with a hard brush (for flamed finished granite) or a black or red polishing pad (for homogeneous tiles).
5. When polishing a thick slurry is formed, do not pull the slurry to the next section. Pick up the dirty slurry with a wet/dry vacuum. Put new powder onto the next section.
6. Check the floor condition after vacuuming
7. Add powder and the ready-mixed Stoneclean Xtra solution if the same area is needed to scrub again.



Heavily soiled matte finished tiles

Used SCL STONECLEAN-Xtra for Restoration:

Things to prepare:

- A 155rpm or 175rpm scrubbing machine.
- Weight of the floor polishing machine: 50kg & above is preferred.
- A wet/dry vacuum.
- A hard brush or black /red polishing pad, it all depends on the type of floor.

Available sizes:

1-litre, 5-litres & 25 litres

Cautions:

- 1) Do not used SCL-HP200 Honing Powder on a polished marble and polished granite.
- 2) Do not used SCL-HP100 Honing Powder on a polished surface marble prior to use marble polishing powder.